

MANUAL HOIST & WINCHES

- 98** Hand Chain Block
- 102** Hand Winches
- 104** Lever Hoist
- 106** Wire Rope Pulling Machines
- 108** Push Trolleys
- 109** Articulated Push Trolleys
- 110** Girder Clamps



MANUAL HOIST & WINCHES - HAND CHAIN BLOCK

VHR®

HAND CHAIN HOIST FOR LOADS FROM 250 TO 5,000 KG

The VHR is a compact, high-performance hand chain block, tested according to official applicable standards.

TECHNICAL CHARACTERISTICS:

Machined chain sprocket and gears provide smoother, more efficient operation

3 metres standard lift. Hand chain is 0.5 metres less than lift chain. Non-standard lifts available

High strength grade 80 alloy steel load chain with galvanized finish offering resistance to corrosion (comply with EN 818, safety factor 4)

VHR's compact design offers safety together with reduced weight. Ideal for construction and maintenance applications

Steel casing solidly protects chain sprocket, gearcase and handwheel cover

Hooks are alloy steel, heat treated and equipped with hook latches and inspection points

Weston type load brake mechanism

High-resistance RAL 7021 powder coating, 70 µ thick

Delivered with CE certificate, hook and chain certificates

A WIDE RANGE OF OPTIONS ARE AVAILABLE INCLUDING:

Chain bag

VHR with normal overhead trolley (HPN)

VHR with low headroom trolley (HPR)

Ex-Atex version VHR

VHR Ex with low headroom trolley

VHR with normal headroom trolley

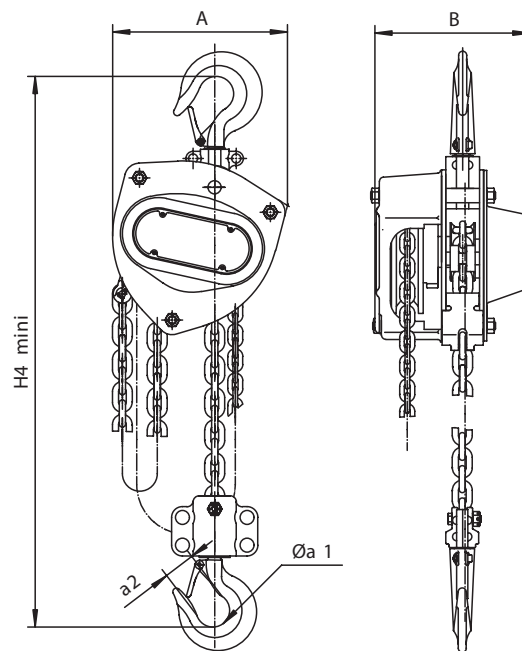


MANUAL HOIST & WINCHES - HAND CHAIN BLOCK



VHR®

Overhead travel trolley
CHD type

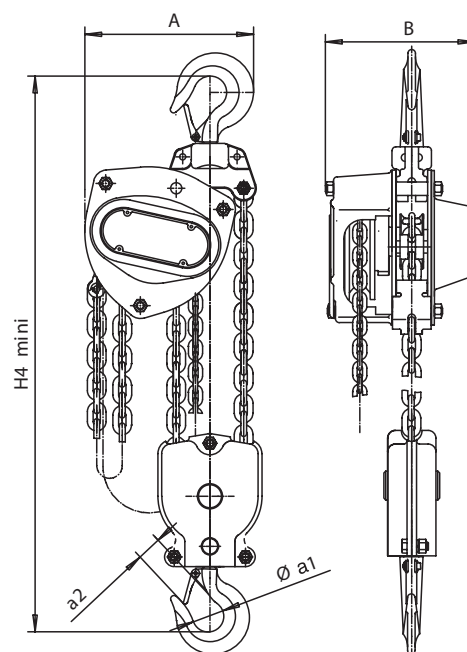


VHR 1-fall



VHR® HPR

Short headroom trolley
operated by hand wheel and
chain type CHDD HPR



VHR 2-fall

Load Kg	A	B	Øa1	a2	H4 min	Chain size	Num. of falls	Pulling force (Kg)	Net weight (Kg)
250	121	114	31	21	280	4 x 12	1	25	6.2
500	148	132	35	23	345	5 x 15	1	35	11
1,000	172	151	40	27	376	6 x 18	1	25	12.5
1,500	196	173	45	33	442	7.1 x 21	1	35	17.8
2,000	210	175	50	35	470	8 x 24	1	35	19.5
3,000	255	205	55	39	548	10 x 28	1	40	35
5,000	280	189	65	45	688	9 x 27	2	36	41.3

MANUAL HOIST & WINCHES - HAND CHAIN BLOCK



SPARKPROOF HAND CHAIN BLOCK FOR LOADS FROM 500 TO 10,000 KG

The VHR is a compact, high-performance hand chain block, tested according to official applicable standards.

SPECIFICATION IDENTICAL TO THE STANDARD VHR WITH THE FOLLOWING FEATURES:

ATEX Marking: Ex II 2GD c IIC T4 T+135 °C

Suitable for zones 1, 2, 21 and 22 hazardous areas

Overload limiter is standard equipment

Stainless steel 316L hand chain

Bronze coated hooks

High-resistance RAL 9006 aluminium-type powder coating,
70 µ thick

ISO hooks with safety latch

Delivered with CE certificate, and hook and chain certificate

OPTIONAL EXTRAS:

Chain bag

VHR Ex-ATEX HPN with normal headroom

VHR Ex-ATEX HPR with low headroom trolley

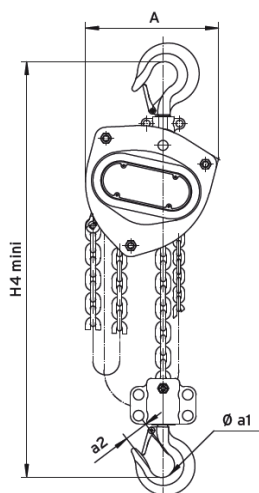


MANUAL HOIST & WINCHES - HAND CHAIN BLOCK

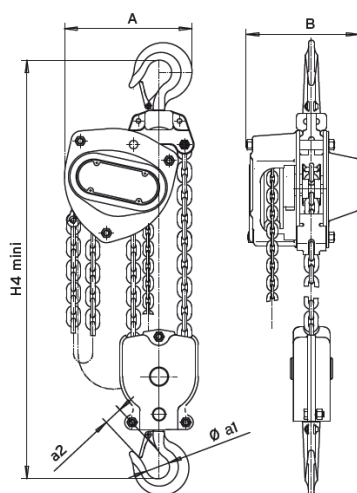
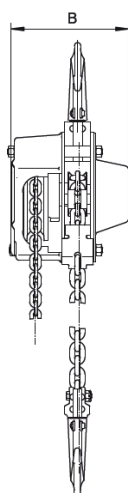


Overhung with travel trolley CHDD type, low-headroom handwheel and chain operation.

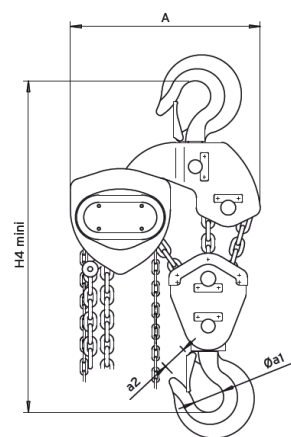
Sparkproof version of hand chain block and trolley.



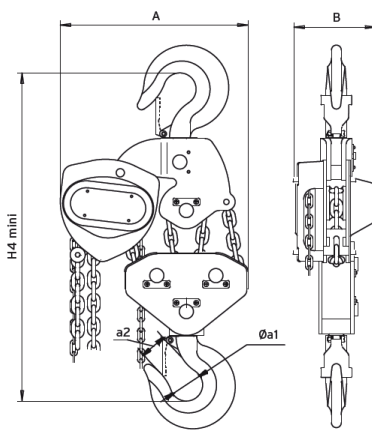
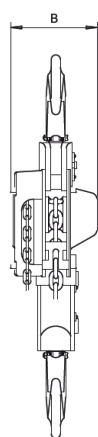
VHR 1-fall



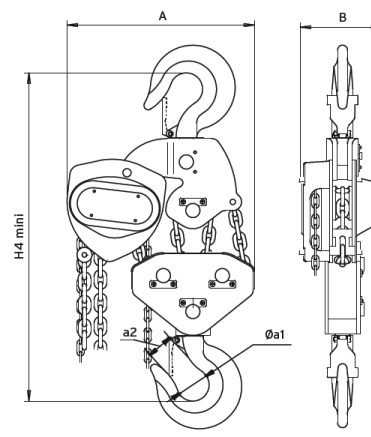
VHR 2-fall



VHR 3-fall



VHR 4-fall



VHR 5, 6, 8-fall

Load Kg	A	B	Øa1	a2	H4 min	Chain size	Num. of falls	Pulling force (Kg)	Net weight (Kg)
500	148	132	35	23	345	5 x 15	1	35	11
1,000	172	151	40	27	376	6 x 18	1	25	12.5
1,500	196	173	45	33	442	7.1 x 21	1	35	17.8
2,000	210	175	50	35	470	8 x 24	1	35	19.5
3,000	255	205	55	39	548	10 x 28	1	40	35
5,000	280	189	65	45	688	9 x 27	2	36	41.3
7,500	433	189	47	67	688	9 x 27	3	38	62
10,000	463	189	75	57	765	9 x 27	4	38	78.5
12,500	430	220	75	54	835	9 x 27	5	38.4	110
16,000	718	200	95	71	900	9 x 27	6	38.7	135
20,000	840	200	136	85	950	9 x 27	8	38.7	192

MANUAL HOIST & WINCHES - HAND WINCHES

ME & MV

ENDLESS SCREW WINCH AND GEARED WINCH 150 TO 3,000 KG

TECHNICAL CHARACTERISTICS:

Automatic brake

Adjustable removable crank

Can be attached horizontally or vertically (depending on model)

A robust and exceptionally sturdy chassis

Mechanical parts protected with cataphoretic coating

Can be declutched only when unloaded; safety system prevents declutching when loaded



ME Type winch



MV Type winch

Type of winch	ME1	ME2	ME3	ME4	ME5	MV1	MV2	MV3	MV4	MV5	MV6
1st level load capacity (Kg)	150	300	500	1,000	2,000	250	500	1,000	1,500	2,000	3,000
Total Rolling Capacity (m)	19	38	17	30	25	15	17	30	23	17	10
Max number of layers	6	6	4	4	3	4	4	4	3	2	1
Crank force required (daN)	20	12.5	19	14.5	16.5	11	14	14	14	14.5	16
Weight without cable (Kg)	5.6	15	15	44	83	7.5	12	37.5	45	70	120
Max and min use temperature	-20°C to + 40°C										

MANUAL HOIST & WINCHES - HAND WINCHES

ME TYPE

ME TYPE MECHANISM:

Gears have passed every type of breakage and endurance test

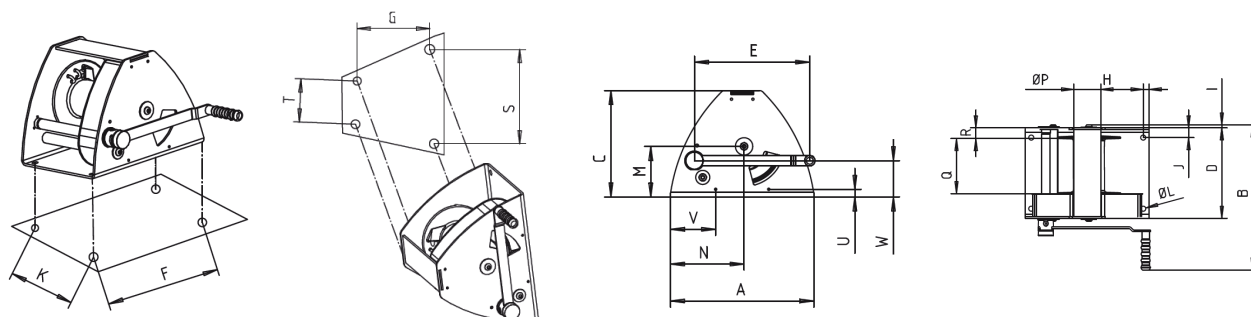
Sprockets are machined to hold grease

Ratchet brake with stainless steel spring has been proven the best system for this type of equipment

RELEASABLE DRUM:

Except on 250 Kg model, MV winches feature a drum that can be disengaged with a small, easily accessible lever

A safety mechanism prevents any declutching when the winch is loaded



Capacity Kg	A	B	C	D	E	F	G	H	I	J	K	ØL	M	N	ØP	Q	R	S	T	U	V	W	X
150	180	325	147	157	340	154	100	13	4	22	114	809	73	90	40	77	24	132	48	31	24	73	90
300	249	400	190	217	240	200	145	18	8	37	144	8013	95	120	62	124	25	184	76	25	33	58	51
500	249	400	190	217	240	200	145	18	8	37	144	8013	95	120	62	124	25	184	76	25	33	58	51
1,000	410	435	305	300	340	370	-	20	10	32	236	4017	145	200	103	180	35	-	-	-	-	104	68
2,000	510	585	360	400	340	440	-	35	11	38	325	4021	151	187	118	248	47	-	-	-	-	267	191

MV TYPE

MV TYPE MECHANISM:

Wheel and worm gear have passed every type of breakage and endurance test for maximum reliability

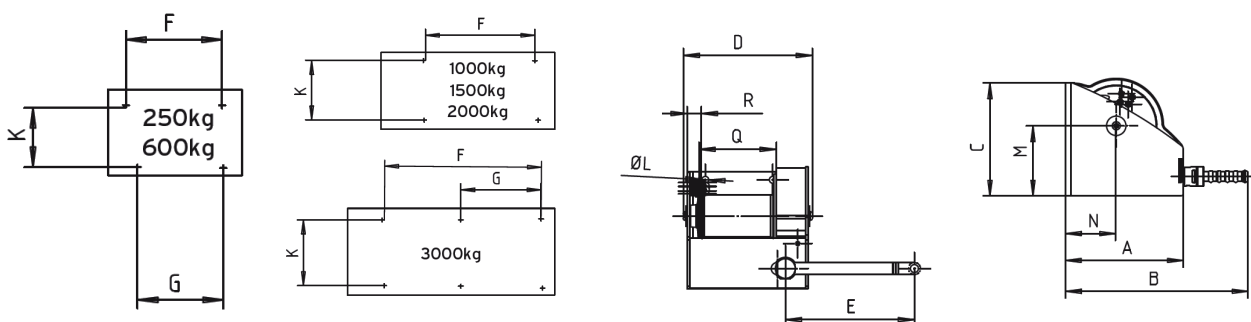
Sprockets are machined to hold grease

Ratchet brake with stainless steel spring has been proven the best system for this type of equipment

RELEASABLE DRUM:

Except on 250 Kg model, MV winches feature a drum that can be disengaged with a small, easily accessible lever

A safety mechanism prevents any declutching when the winch is loaded



Capacity Kg	A	B	C	D	E	F	G	H	J	K	ØL	M	N	ØP	Q	R
250	150	330	150	200	250	137	100	25	15	118	4011	89	75	60	100	24
500	180	360	180	260	250	182	130	32	18	142	4013	109	90	70	145	30
1,000	300	490	300	300	340	167	-	32	21	250	4017	180	146	101	176	30
1,500	300	490	300	300	340	167	-	32	21	250	4017	180	146	101	176	30
2,000	345	540	345	405	340	160	-	40	25	295	4021	222	168	121	275	40
3,000	525	700	460	510	340	390	70	40	380	6025	325	173	168	300	55	248

MANUAL HOIST & WINCHES - LEVER HOIST



MANUAL LEVER HOIST FOR LOADS FROM 250 TO 3,000 KG

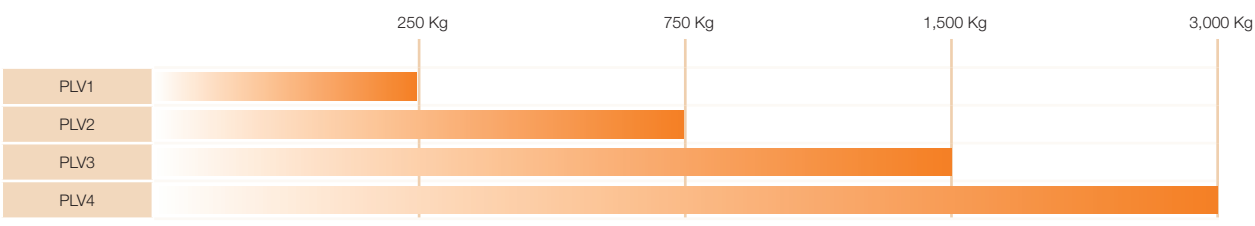
The PLV manual lever hoist is a compact unit for lifting, pulling and sliding. Especially suitable for industrial use.
Ideal for areas where headroom is limited.

TECHNICAL CHARACTERISTICS:

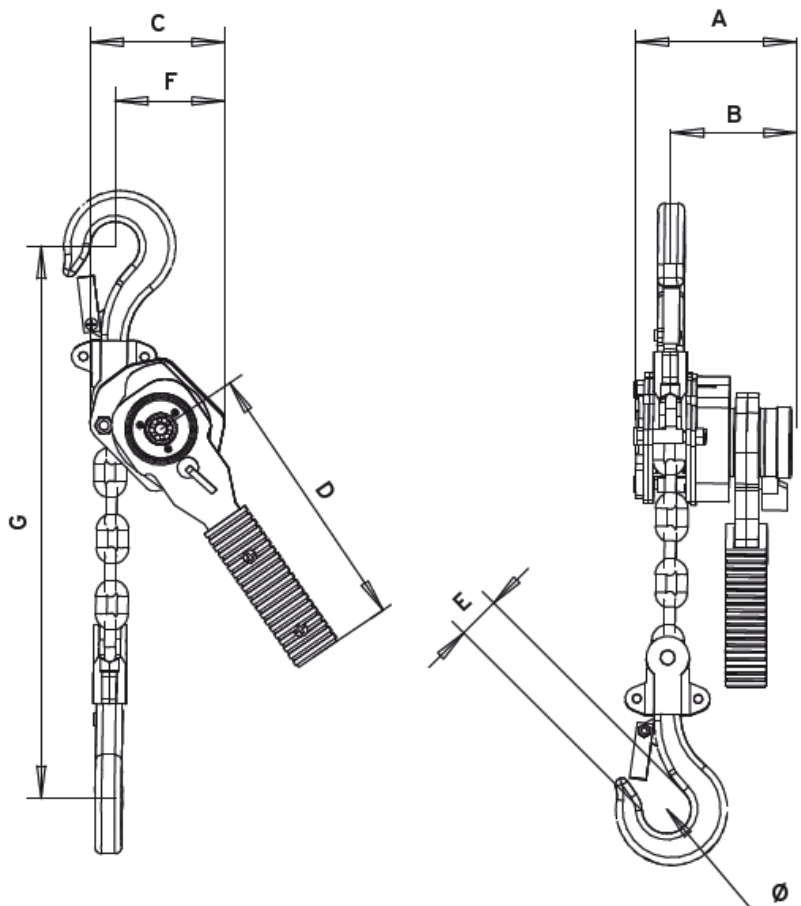
- Choice of four robust, compact, lightweight, easy handling units
- PLV can be used in any position; simply switch the lever to make the PLV easier to handle
- Chrome-plated steel hoist and lever
- Reinforced casing effectively protects mechanisms
- Lever rotates 360°
- Rubber grip
- Weston-type load brake with four braking surfaces
- Braking mechanism fully protected against dust and splashing
- Extra-safe, lightweight and low-maintenance
- Chain can be declutched when winch is not loaded
- High-strength grade 80 steel alloy chain. Galvanized for corrosion resistance
- Complies with EN 818, safety factor 4
- Delivered with CE certificate, hook and chain certificates
- Treated steel alloy upper



LOAD CAPACITY



MANUAL HOIST & WINCHES - LEVER HOIST



Capacity Kg	A	B	C	D	E	F	G	Ø	Lifting height (m)	Num. of falls	Chain diam. (mm)	Weight (Kg)
250	92	71	70	168	20	50	245	31	1	1	4	2.1
750	149	89	128	308	26	85	310	37	1	1	6	6.2
1,500	171	102	145	408	36	130	385	45	1.5	1	7	9.5
3,000	204	114	203	418	44	150	460	55	1.5	1	10	20.2

MANUAL HOIST & WINCHES - WIRE ROPE PULLING MACHINES

TIRFOR®

TIRFOR® machines are portable manual hoists used with Maxiflex wire rope. They can be used to lift, pull and position loads over great distances depending on the wire rope length. They are suitable for use in numerous configurations and are the ideal solution for

use in professional applications. They are operated by a simple lever option and the load capacity of the TIRFOR® system can be increased by using sheave blocks.

FEATURES:

Low weight—quick installation

No limitation in terms of cable length

Manageable, light-weight, robust and powerful

Increase load capacity with deflection sheaves

Overload protection

Precise load placement within millimetres



NO WHEELS OR GEARS REQUIRED:

Two jaws alternately pull the wire rope and the load in the required direction, just like pulling on a rope with both hands

The jaws are self-clamping, providing immediate and gradual safety

The heavier the load, the tighter they clamp

A release mechanism allows the wire rope to be inserted between the jaws

MULTIFUNCTION:

Work can be performed in any position; horizontal, vertical or at an angle

There is no limit to the length of wire rope

The capacity can be increased

SAFETY AND RELIABLE:

Constant control of the load during lifting and lowering with accuracy to within one millimetre

When stationary, the load is automatically distributed between the two jaw units

Overload safety device

INCREASED CAPACITY:

Using the sheave block technique, the capacity of the TIRFOR® can be increased by a factor of 2, 3, 4 or more

MANUAL HOIST & WINCHES - WIRE ROPE PULLING MACHINES

TIRFOR® 500 SERIES

Compact, lightweight and easy to handle, TIRFOR® T-500 units combine ease of handling and safety. They are recommended for applications where portability is an important criteria.

Item No.	Model	WLL	Machine weight (Kg)	Wire rope weight (20m)	Maxiflex Tirfor wire rope (mm)	Wire rope breaking strain Kg	Dimensions of the machine L x I x W (mm)	Dimensions of the handle open / closed
18109	T-508	800 Kg	6.6	6.1	8.3	5,500	420 x 250 x 59	690-400
18119	T-516	1,600 Kg	13.5	13.1	11.5	9,200	530 x 315 x 127	1,150-650
18129	T-532	3,200 Kg	24	26.6	16.3	18,400	620 x 355 x 130	1,150-650

TIRFOR® TU SERIES

For lifting, pulling and positioning heavy loads. The models in the TIRFOR® range are unrivalled in terms of durability and sturdiness.

Item No.	Model	WLL	Machine weight (Kg)	Wire rope weight (20m)	Maxiflex Tirfor wire rope (mm)	Wire rope breaking strain Kg	Dimensions of the machine L x I x W (mm)	Dimensions of the handle open / closed
18009	TU8	800 Kg	8.4	6.1	8.3	5,500	527 x 265 x 108	770-510
18029	TU16	1,600 Kg	20	13.1	11.5	9,200	660 x 330 x 140	1,190-680
18039	TU32	3,200 Kg	27	26.6	16.3	18,400	676 x 330 x 156	1,190-680

TIRFOR®

Manual lifting and pulling machines for use underground.

Item No.	Model	WLL	Machine weight (Kg)	Wire rope weight (20m)	Maxiflex Tirfor wire rope (mm)	Wire rope breaking strain Kg	Dimensions of the machine L x I x W (mm)	Dimensions of the handle open / closed
460490	TU8C	800 Kg	8.4	6.1	8.3	5,500	527 x 265 x 108	770-510
465050	TU16C	1,600 Kg	20	13.1	11.5	9,200	660 x 330 x 140	1,190-680
6129	T35	3,000 Kg	27	23	16.3	18,400	650 x 330 x 156	1,190-680

UNIVERSAL LIFTING & PULLING DEVICE, CAPACITY: 300 KG & 500 KG.

Ultra light weight and robust, easy to operate and maintain. Can be used in numerous applications.

Item No.	Model	WLL	Machine weight (Kg)	Wire rope weight (20m)	Special Tirfor wire rope Ø (mm)	Wire rope breaking strain Kg	Dimensions of the machine L x I x W (mm)	Dimensions of the handle open / closed
5469	Jockey	300 Kg	1.75	1.8	4.7	1,200	320 x 200 x 40	400
5479	Jockey	500 Kg	3.75	3.7	6.5	2,400	370 x 215 x 55	500
7479	A03 Pulley							

N.B. Hydraulic and pneumatic TIRFORS are also available upon request.

MANUAL HOIST & WINCHES - PUSH TROLLEYS

CHD-CHDD®

MANUAL TRAVEL TROLLEY FOR LOADS OF 250 TO 20,000 KG

TECHNICAL CHARACTERISTICS:

Can be used with any type of overhead hooked lifting device

Operated by directly pushing the load (CHD models) or using a handwheel and chain (CHDD models)

Delivered in individual boxes, ready to assemble

Easily adjustable to fit up to 300mm beams (over 300mm on request)

Trolley flange made of heavy-duty steel

Side plates finished with RAL7021 powder coating, 70 µ thick

Rollers machined for smooth movement

Rollers compatible with all sorts of I and H beams

Watertight, maintenance-free ball bearings

Galvanized hand chain

Fall-prevention brackets and rubber stops

Loads up to 20 tonnes (higher capacity possible on demand)

Serial number inscribed on chassis

OPTIONS AVAILABLE:

Stainless steel load chain

Ex version with ATEX markings

Chrome-plated version of trolley available



CHD®

Travel trolley operated by push action on load.

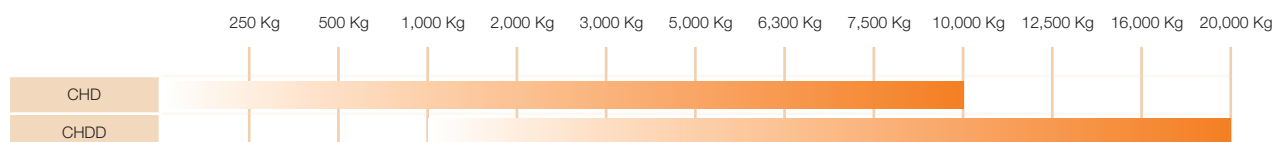


CHDD®

Travel trolley operated by hand wheel and hand chain.



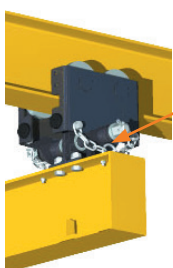
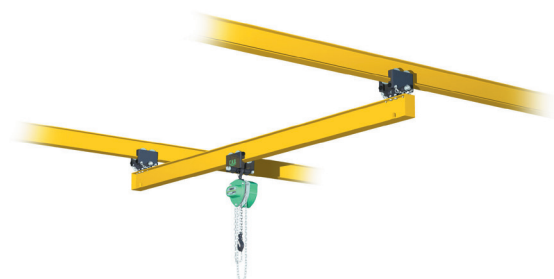
LOAD CAPACITY



MANUAL HOIST & WINCHES - ARTICULATED PUSH TROLLEYS

PRD®

**TROLLEYS DESIGNED FOR HAND-OPERATED
ARTICULATED SLIDING GIRDER SYSTEMS
FOR LOADS OF 500 TO 2,500 KG.**



As optional extra: 2 safety chains.
The purpose of this system is to
restore the link between the trolleys
and beam in the event of failure of
the coupling linking the trolleys to
the beam.

TECHNICAL CHARACTERISTICS:

The ideal partner for this articulated rolling beam is a hand powered chain hoist

A pair of trolleys each fitted with four steel rollers (mounted on ball bearings)

The adjustment of the roller raceway profile consists of a treated steel tie-bar

4 anti-drop rollers (in compliance with legislation)

A coupling consisting of a strap piece in die-stamped steel and 2 articulations, one of which is mounted on a ball and socket joint

The assembly boltwork

Assembly documentation

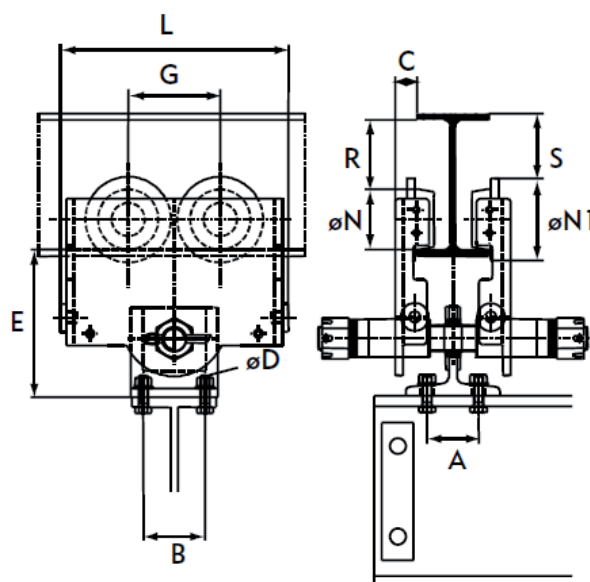
OPTIONS AVAILABLE:

Hand chain block or electric hoist

Travelling trolley

SPANS & LOAD CAPACITIES

	1m	2m	3m	4m	5m	6m	7m	8m	
500 Kg									PRD5
1,000 Kg									PRD10
1,600 Kg									PRD20
2,000 Kg									PRD32
2,500 Kg									



OVERALL DIMENSIONS

Type of beam trolley	A	B	C	ØD	E	G	L	ØN	ØN1	R*	S*
PRD 5	65	42 à 64	19	HM 10-30 class 8-8	145	84	202	55	79	109	106
PRD 10	65	40 à 78	23.5	HM 12-35 class 8-8	167	101	241	60	92	66	57
PRD 20	65	48 à 78	27	HM 14-40 class 8-8	185	116	288	76	104	88	82
PRD 32	65	48 à 94	32	HM 16-45 class 8-8	232	144	358	96	131	68	61

* The clearances are indicated based on the minimum profile served by each trolley.

MANUAL HOIST & WINCHES - GIRDER CLAMPS

PAP®

GIRDER CLAMP FOR LOADS OF 1,000 TO 5,000 KG

The PAP enables a lifting device to be hooked in a fixed position from either a girder, an attachment point for hoisting profiles or installation of mechanical limit switch (stop).

TECHNICAL CHARACTERISTICS:

Versatile jaws designed to mount on a wide range of I and H beams

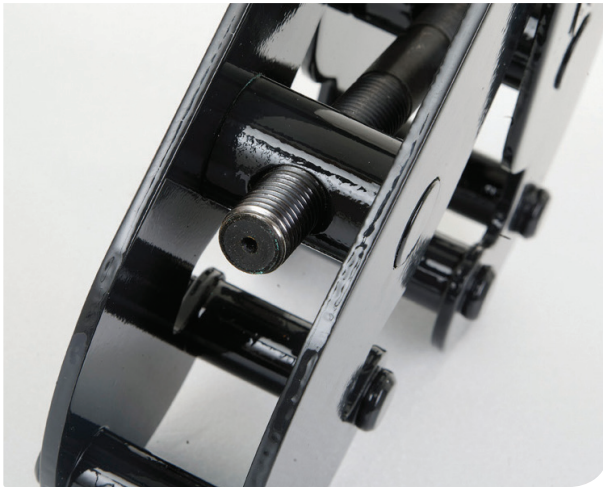
Built-in suspension bar allows for low headroom

Easily installed and adjusted by hand

Locking safety screw

Provides temporary or permanent mounting point for hook mounted hoists or lever pullers

Designed to minimize stress applied to beam



OVERALL DIMENSIONS

Model	Capacity (Kg)	Distance (mm)	Weight (Kg)
PAP 1	1,000	75 - 230	3.9
PAP 2	2,000	75 - 230	5
PAP 3	3,000	80 - 316	9.5
PAP 5	5,000	90 - 306	11.3

